

Operating Instructions

Model: DT-EW

Compatible with RC2-W

Ref: DT-EW

Revision 1 11/09

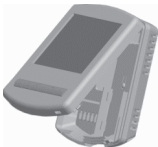
Contents Page

Install Procedure	2-3
Pairing the Thermostat	4-5
Icons Explained	6
Temperature Display	6
Locking the Thermostat	7
Heat On/Off	8
Factory Reset	9
Optional Features Explained	10-13
Optional Feature Setup	14-15

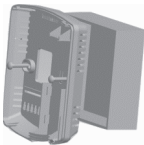
Installation Procedure

Mount the thermostat at eye level.

Installation



Carefully separate the front half of the thermostat from the back plate by placing a small flat head terminal driver in to the slots on the bottom face of the thermostat.



Fix the back plate to the wall. Clip the front of the thermostat to the back plate.

Installing the Batteries

2 AAA batteries are supplied with the thermostat.



To access the battery holder, push and release the compartment door (located on the bottom face of the thermostat)

Install the batteries in the holder, following the polarity of the batteries. Then push the holder back inside the thermostat.

You should replace the batteries in the thermostat when the battery icon is displayed on the LCD. Ensure you replace the batteries within 1 minute in order to regain the current clock setting.

Pairing the Thermostat






With the thermostat turned off

- Press the Clock button until the LCD comes on.
- You will now see a small number 01 in the top right corner of the LCD. This is feature 01
- Press Clock again until you see feature 07 (Receiver Address)
Use the Up/Down keys to set the address. A unique receiver address must be set for each receiver installed. (RF is disabled if receiver Address is set to 00)
- Press A to accept, the display will now go blank.

Pairing the thermostat

- On the receiver, press and hold the pairing button until the Comms LED comes on
- Turn off the thermostat by holding down the power button.
- On the thermostat, press the A key for 5 seconds. The thermostat will send a signal for 1 minute, and will flash the RF signal icon.
- If successful, the receiver will flash the Comms LED.
- Press the power button once on the thermostat to confirm pairing with the receiver.
- If the pairing is unsuccessful, reposition the thermostat and try again.

Icons Explained

Heating On	
Heating Off – Frost Mode	
Key Lock	
RF Signal Active	
Battery	

Temperature Display

Room Temp = This is the current room temperature.

Set = This is the temperature you are trying to achieve in your home.

Locking the Thermostat

The thermostat has a key-lock facility. To enable, follow these steps;

- Press and hold the A and Down key for 10 seconds
- You will see the lock symbol appear
- To unlock, repeat the steps above.

Temperature Set

Using the Up/Down arrow keys allows you to adjust the set temperature. When you press either of these keys, you will see the word SET and the desired temperature.

Press A to accept.

Heat On/Off

Frost Protect: Pressing the power button once will place the thermostat in frost protect mode. In this mode, the thermostat will display the frost icon and will only turn the heating on should the room temperature drop below the set temperature. Should the heating be turned on whilst in frost mode, the flame symbol will be displayed. To cancel the frost protect mode, press the power button.

Thermostat off:

To turn the thermostat off completely, press and hold the power button. The display and heating output will be turned off. To turn the thermostat back on, press the power button.

Factory Reset

The thermostat has a factory reset function. This will reset all settings back to their factory default. To perform a factory reset, follow these steps;

- Turn the thermostat off
- Press and hold the Power and Up arrow key until the LCD powers up. All of the icons will be displayed. When they have disappeared, the thermostat has been reset.

THE FOLLOWING SETTINGS ARE OPTIONAL AND IN MOST CASES NEED NOT BE ADJUSTED

Optional Features Explained

Feature 01 – Temperature Format: This function allows you to select between °C/F

Feature 02 - Switching Differential: This function allows you to increase the switching differential of the thermostat. The default is 1°C which means that with a set temperature of 20°C, the thermostat will switch the heating on at 19°C and off at 20°C. With a 2°C differential, the heating will switch on at 18°C and off at 20°C

Feature 03 – Frost Protect: You can set whether the thermostat will maintain the frost temperature when the thermostat display is turned off. As a default, this is enabled

Feature 04 – Frost Protect Temperature: This is the temperature maintained when the thermostat is in frost mode. The range is 07-17°C. The default is 12°C and is suitable for almost all applications.

Feature 05 – Output Delay: To prevent rapid switching, an output delay can be entered. This can be set from 00-15 minutes. The default is 00 which means there is no delay.

Feature 06 – Not used on this model

Feature 07 – Receiver Address: Within one building, up to 32 RC2-W receivers can be used. Each receiver must have a unique receiver address.

Feature 08 – Not used on this model

Feature 09 – Not used on this model

Feature 10 – Fail Safe

If enabled, the thermostat will send a signal to the receiver every 20 minutes. Should the receiver fail to receive two signals, the receiver will activate the output for 20% of the time. This is to protect the system against a loss of wireless signal or should the thermostat battery fail whilst you are away.

Feature 11 – Up/Down Temperature Limit

This function allows you to limit the use of the up and down temperature keys. This limit is also applicable when the thermostat is locked and so allows you to give others limited control of the heating system.

Feature 12 – Sensor Selection

On this thermostat you can select between built in air sensor and remote air sensor. A floor sensor **must** be connected to the receiver before it will operate.

Feature 13 – Floor Limit

This thermostat uses the floor limiting sensor connected to the receiver to protect the floor surface from overheating. The floor limit is set from the thermostat but stored in the receiver. Should the RF link fail, the receiver will limit the floor from overheating. The limit can be adjusted from 20-45°C

Adjusting the Optional Settings

1. To access the configuration menu, turn off the thermostat by pressing and holding down the power button.
2. Press and hold down the Clock button until the display comes on.
3. The small number is the feature number, the large number is the setting value
4. Use the clock button to cycle through the features.
5. Use the Up/Down keys to change the setting.
6. Press A to accept and store.

Feature Table

Feature	Description	Setting
01	Temperature Format	00=C 01=F
02	Switching Differential	01-03C 01°C Default
03	Frost Mode	00= Disabled 01 =Enabled (01= Default)
04	Frost Temperature	07-17C (12C Default)
05	Output Delay	00-15 Minutes (00 Default)
06	Not used on this model	
07	RC2-W Address	01-32
08	Not used on this model	

09	Not used on this model	
10	Fail Safe	00 Disabled 01 Enabled Default 00
11	Up/Down Limit	00-10C 00C Default
12	Sensor Selection	00 = Built in air sensor 01 = Remote air sensor
13	Floor Limit	20-45C Default = 28C

Set feature 12 to 01 to
enable the remote air
probe.

REMOTE AIR PROBE

